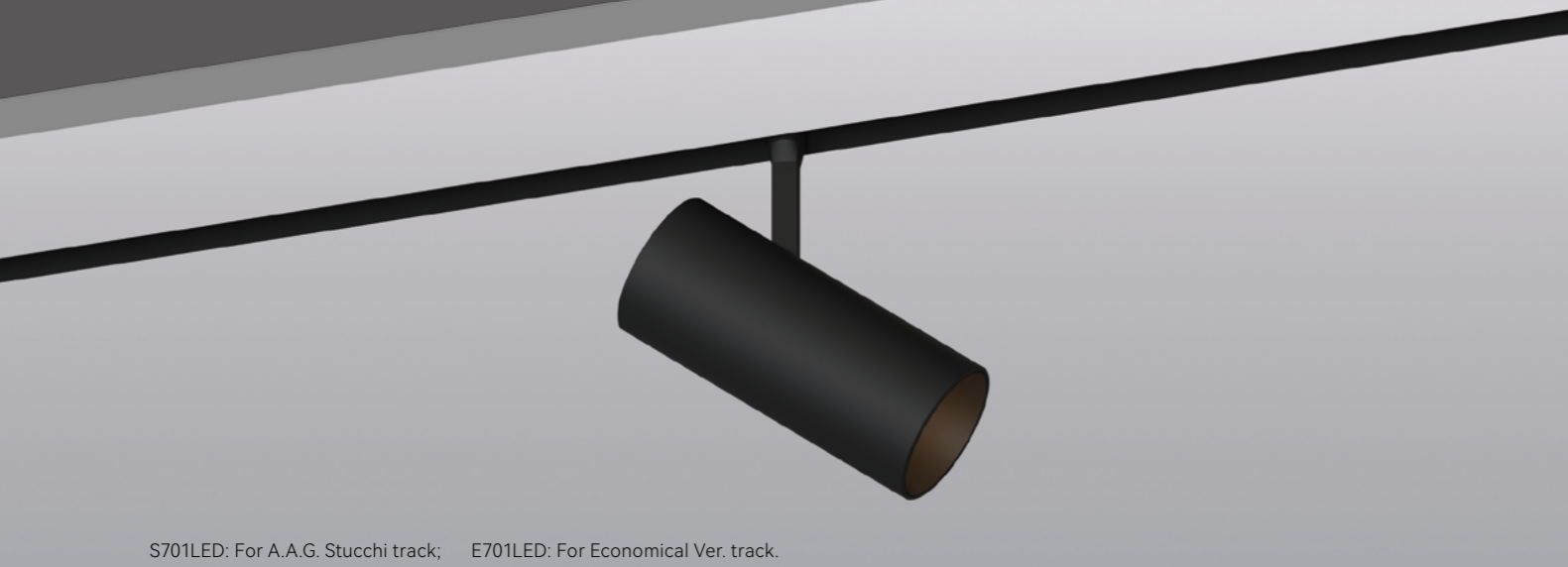


AAG series

← Back

S701LED (E701LED)



S701LED: For A.A.G. Stucchi track; E701LED: For Economical Ver. track.

Quickinfo

General
Magnetic
DC 48V
IP20

LED

CITIZEN

25W
2700K, 3000K, 4000K, 5000K
50000h@L80
CRI ≥ 90
SDCM: 3

OPTICAL

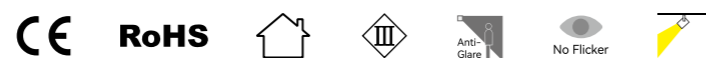
Direct illumination
Beam angle 15° /24° /38°
Optical accessories

ELECTRICAL

Non DIM
1-10V
DALI
Bluetooth

PHYSICAL

Aluminum



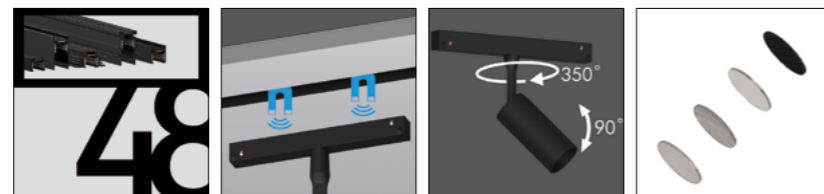
Description

Track installation, high power design, can provide more luminous flux and project to a longer distance.

Applications

Showrooms, Restaurants, Star-rated Hotels, Villas, Residential buildings, etc.

Features



Standard configuration

COLOUR TEMPERATURE
2700K
3000K

CONTROL
Non DIM

OPTICAL
15° /24° /38°

COLOUR(housing)
Black

COLOUR(reflector)
Black, White, Gold

Extended configuration

COLOUR TEMPERATURE
4000K
5000K

CONTROL
DALI, 1-10V

Options on request

CONTROL
Bluetooth

Parameters

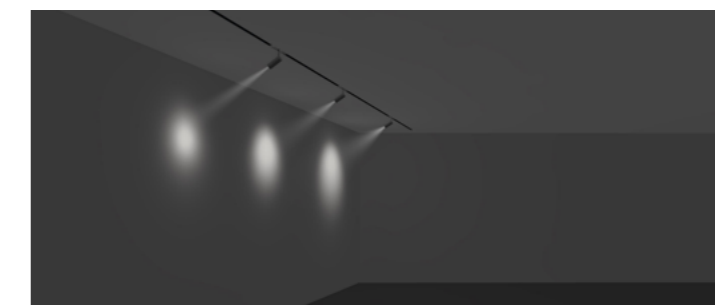
POWER	DC INPUT	CCT	LUMINOUS FLUX
25W	48V	2700K	1622~1760 lm
		3000K	1716~1803 lm

Test standards:
Citizen COB, CRI 90, tolerance range of electrical and optical parameters: ±10%.

Light Distribution

25W 15° 3000K Ra90			25W 24° 3000K Ra90			25W 38° 3000K Ra90		
H(m)	E(lx)	D(m)	H(m)	E(lx)	D(m)	H(m)	E(lx)	D(m)
3	1848	0.84	3	924	1.27	3	474	1.98
4	1039	1.12	4	520	1.69	4	267	2.65
5	665	1.41	5	333	2.11	5	171	3.31
6	462	1.69	6	231	2.53	6	119	3.97
7	340	1.97	7	170	2.96	7	87	4.63

Light effect and planning aid



Emphasis of objects or architectural elements.

Technical drawing

